



AIR FACILITIES DATA PAMPHLET

LAOS



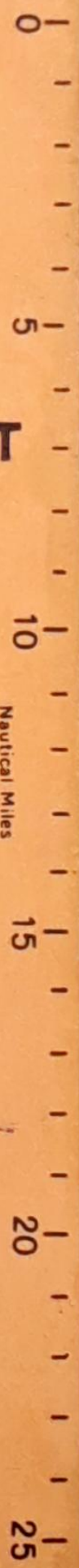
SCALE 1:250,000

Nautical Miles

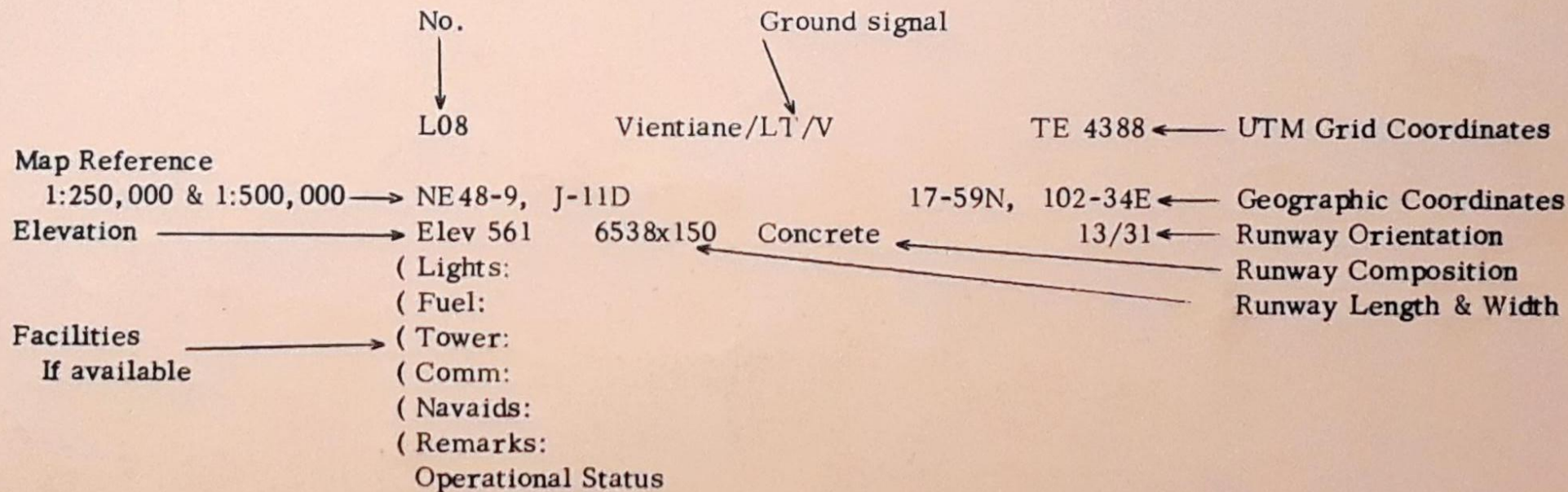
DECEMBER

1968

**FLIGHT INFORMATION
CENTER
VIENTIANE**



AIRFIELD DATA KEY

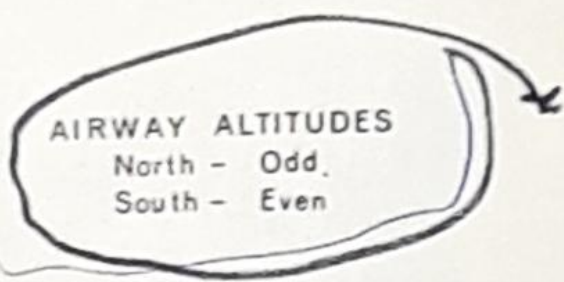


- OPEN: Open to all Company Aircraft unless otherwise stated.
- RESTRICTED: Restrictions are noted for specific aircraft. Smaller aircraft than those noted are Unrestricted.
- CLOSED: Closed to all fixed wing aircraft
- UNF: Unfriendly

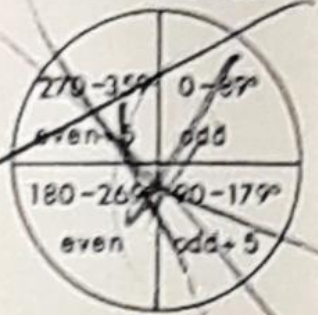
CONTENTS

- SECTION I Area Approach and Letdown Plates
- SECTION II Lima Airfields
 STOL Sites
- SECTION III Airfield Index by UTM Grid Coordinates
- SECTION IV Alphabetical Index
- SECTION V General Information

DELTA AIRWAY

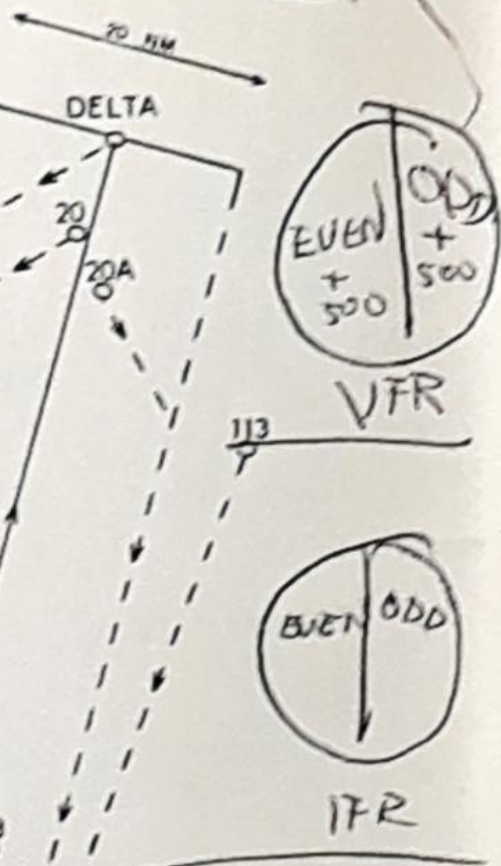


OFF DELTA AIRWAY ALL ROUTES

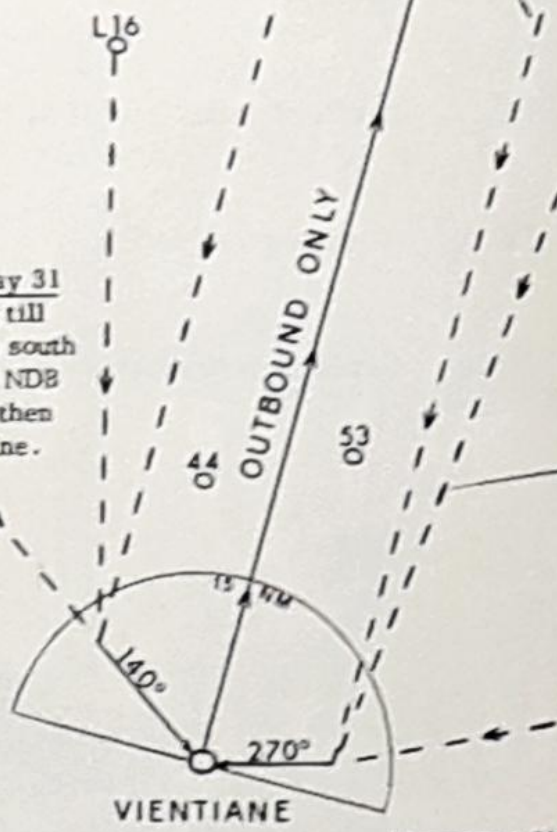


Altimeters set 29.92 upon passing 4000' in climb. Airway extends from surface to 11500' PA.

All Aircraft inbound to L08 from the north will avoid outbound Delta airway. Stay 10 nm away from centerline until bearing of 140° (AC west) or 270° (AC east) is received.



Departure North - Runway 31
Maintain runway heading till 800' then 1/2 SRT left to south continuing overhead L08 NDB between 2500' and 3000' then climb on course centerline.



All Aircraft will guard VHF 118.1 within 15 nm of the airport.

When below 3000' MSL and 15 nm of L08 proceed directly to the airport.

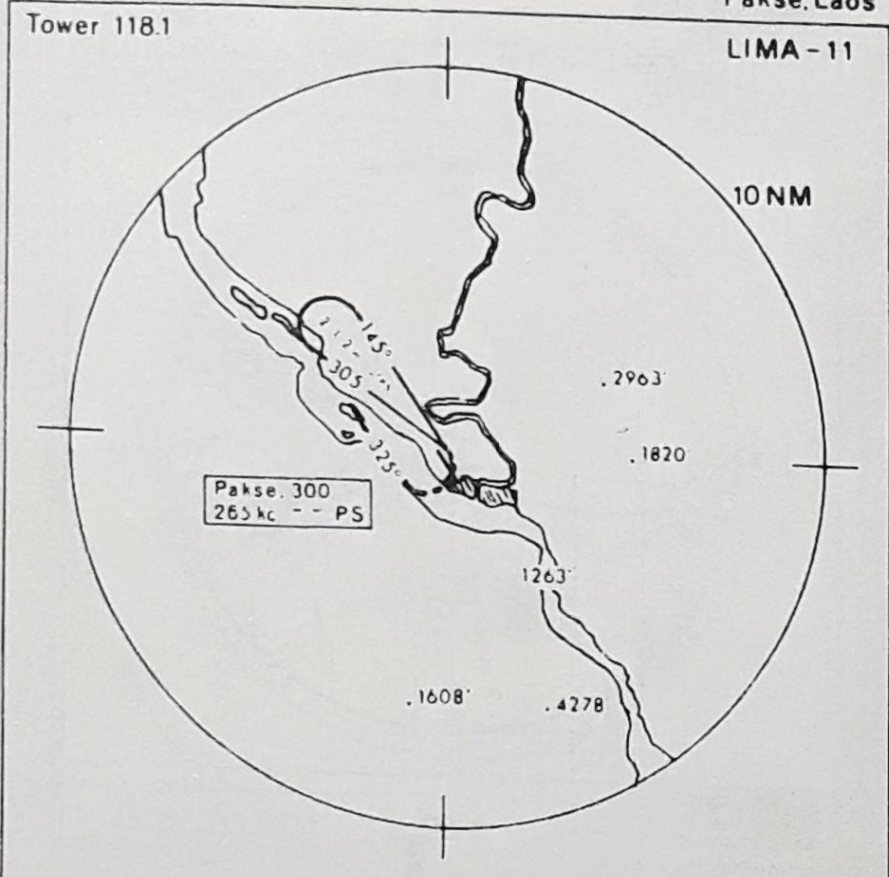
Departure North - Runway 13
Maintain runway heading till 1000' then 1/2 SRT right to south continuing overhead L08 NDB between 2500' and 3000' then climb on course centerline.

Approach Chart

Pakse, Laos

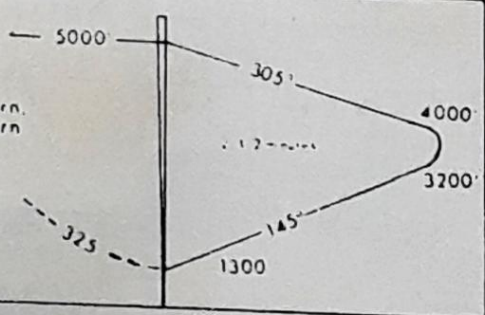
Tower 118.1

LIMA-11



Day & Night minima
1300' 1 mile

Missed Approach Immediate right turn,
climb on 325° to 3000' then right turn
and home on station



Approach Chart

Tower 118.1

Company Operated Facilities

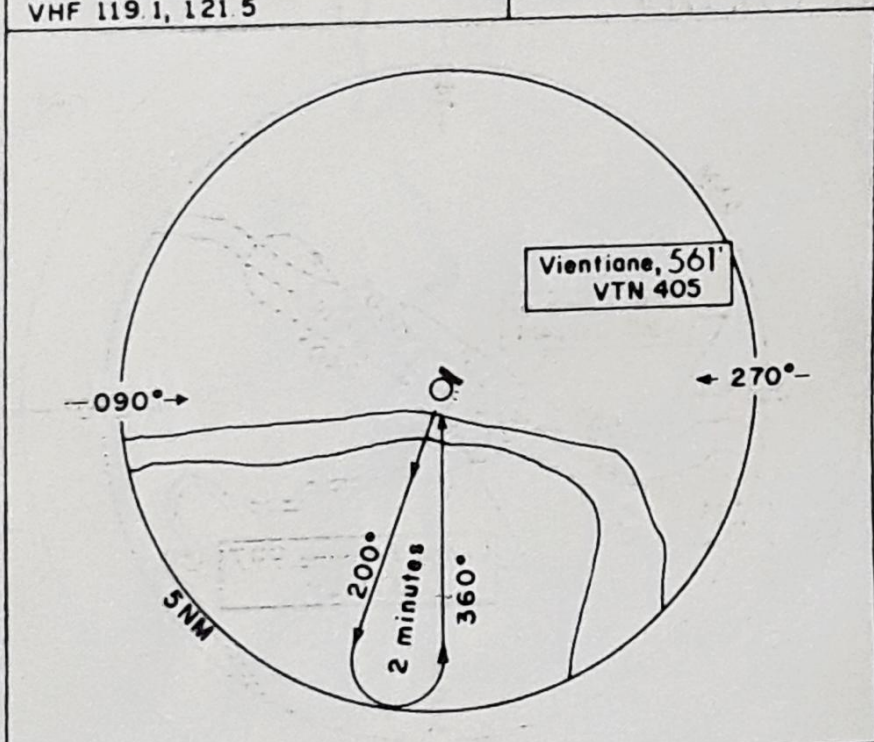
H/F 8765 kcs.

VHF 119.1, 121.5

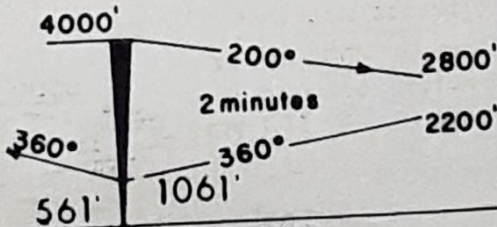
VIENTIANE

VTN 405 kcs

AM 1580 kcs



Missed Approach
Climb out on 360°
executing a right
climbing turn with-
in 10 NM Track
inbound on 200°
to recross VTN at
3000' or higher.



R/W Elev. 560'
Var. 0°
QFE 500-1
QNH 1061'

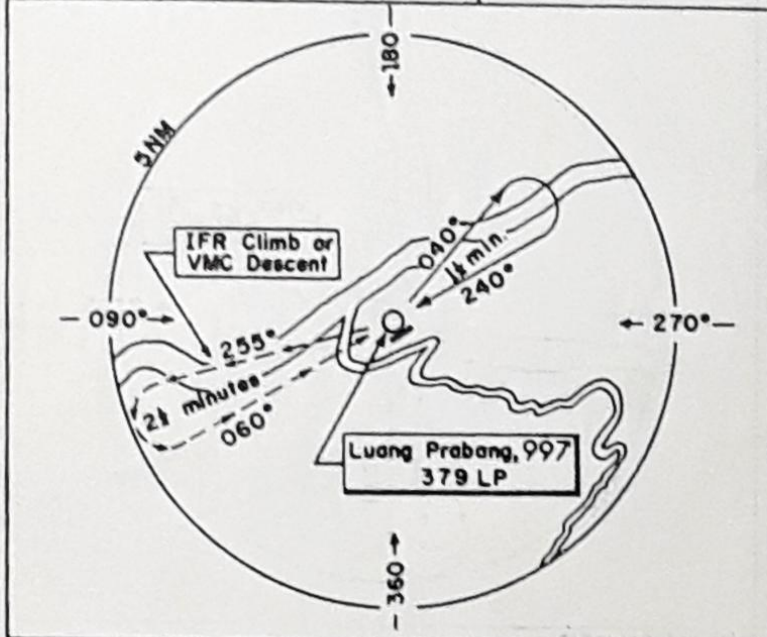
R/W Hdg. 13/31
R/W Length 6538'
R/W Sfc Concrete

17° 59' N - 102° 34' E

Approach Chart

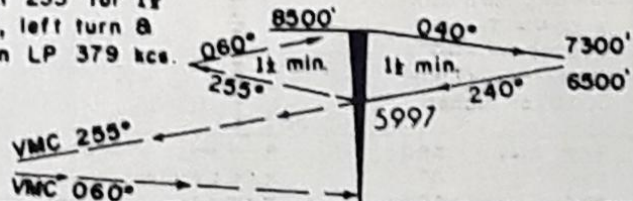
LUANG PRABANG
LP 379 kcs.

Tower: 118.1
Company Operated Facilities:
H/F 8765, 5568 kcs. APN-2
VHF 119.1, 121.5



Missed Approach

Climb on 255° for 1 1/2 minutes, left turn & home on LP 379 kcs.



R/W Elev	997'	R/W Hdg.	06/24
Var.	0°	R/W Length	5413
QFE	5000'-2	R/W Sfc.	Macadam
QNH	5997'		

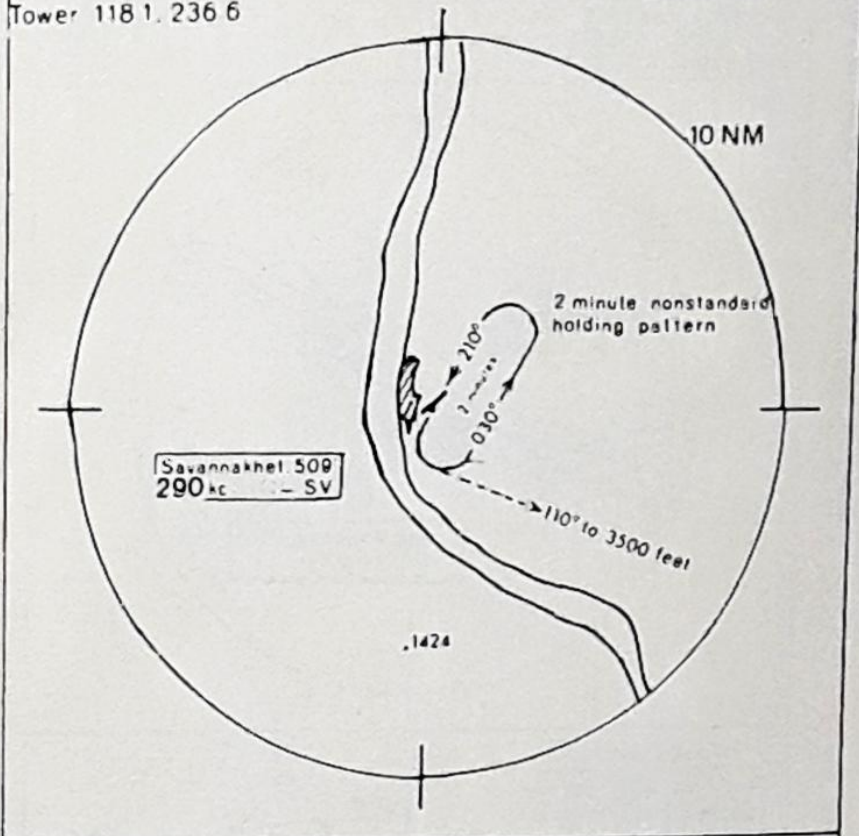
19° 54' N - 102° 09' E

Approach Chart

Savannakhet, Laos

Tower 118 1. 236 6

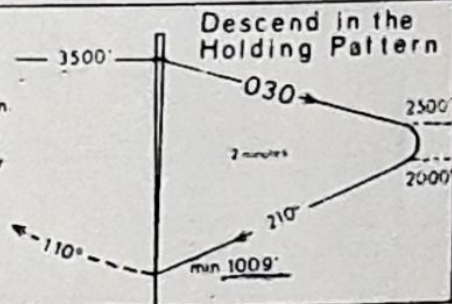
LIMA-39

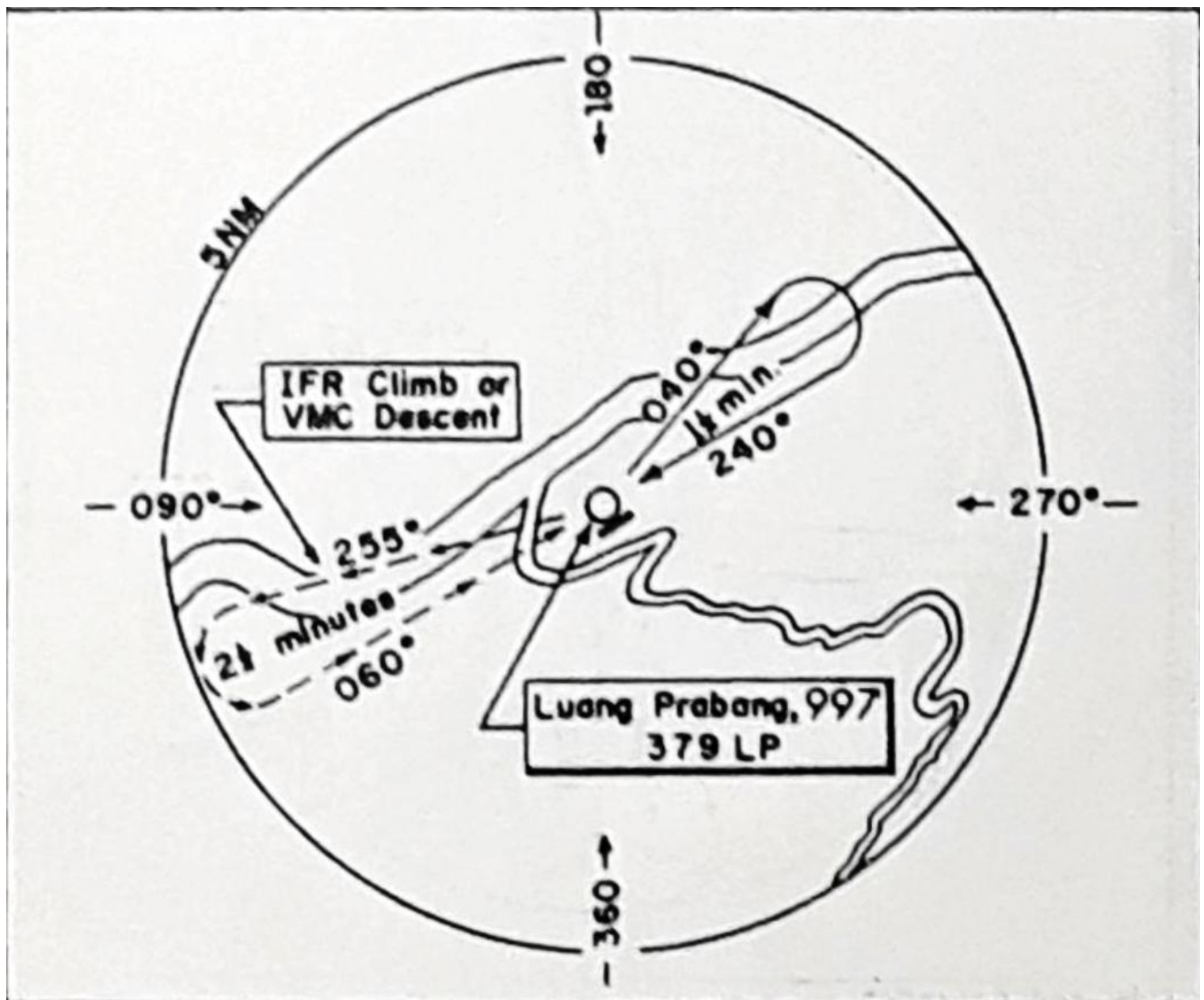


Day and Night minima - 500', 1 mile

Missed Approach: left turn, climb on 110° to 3500'; return overhead station.

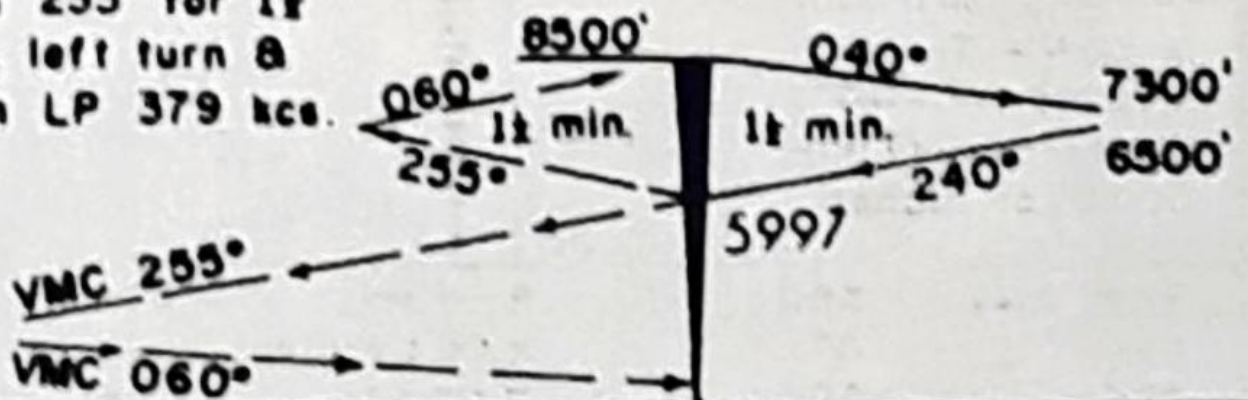
CAUTION Do not cross Mekong River (See Thailand Prohibited area)





Missed Approach

Climb on 255° for 1 1/2 minutes, left turn & home on LP 379 hcs.



R/W Elev 997'
 Var. 0°
 QFE 5000'-2
 QNH 5997'

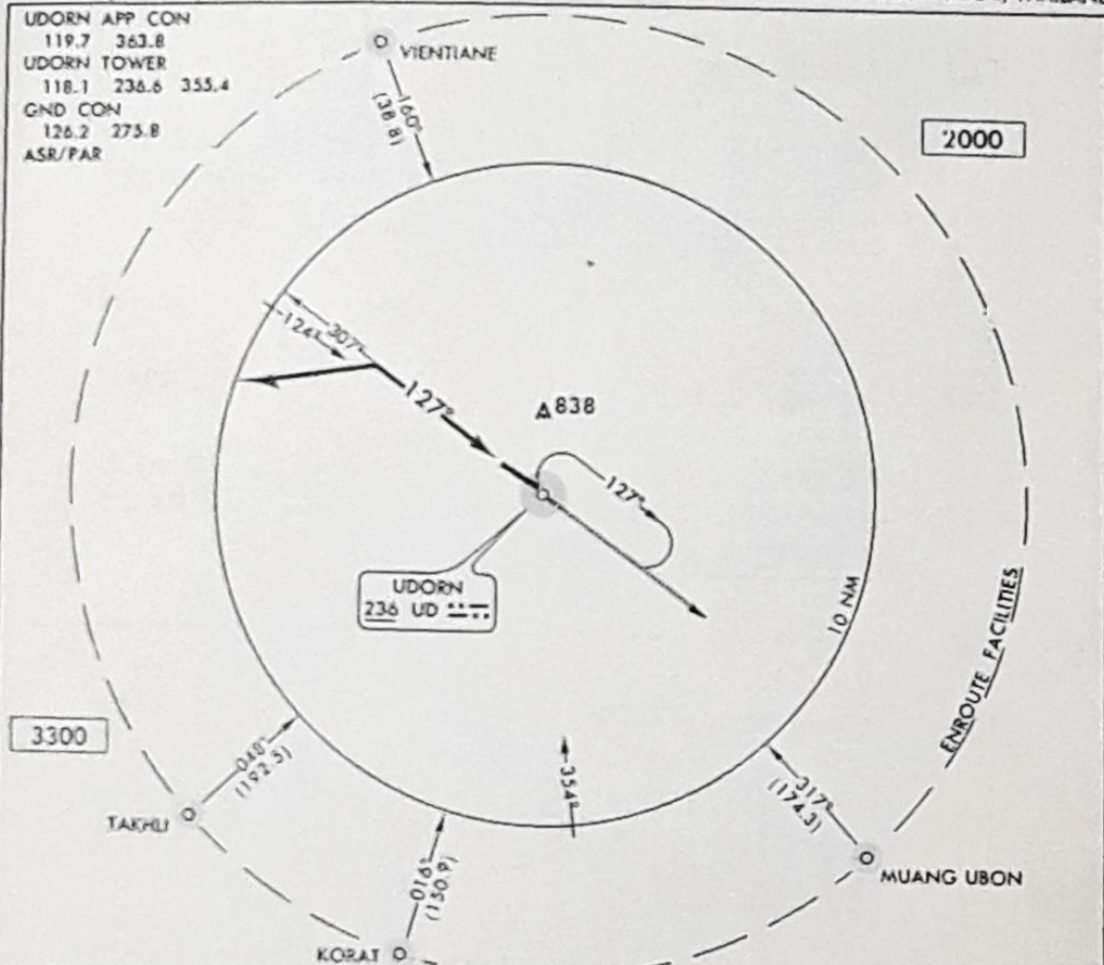
R/W Hdq. 06/24
 R/W Length 5413
 R/W Sfc. Macadam

NDB (ADF)-1 RWY 12

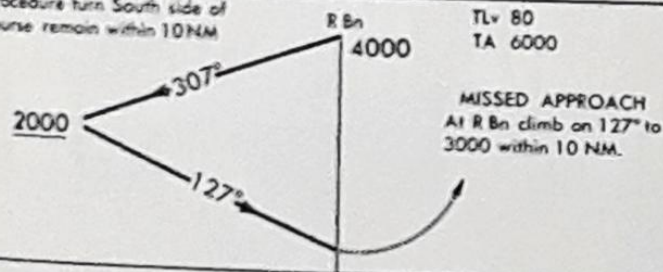
302
AL-1525 (USAF)

UDORN A/D
CHANGWAT UDON THANI, THAILAND

UDORN APP CON
119.7 363.8
UDORN TOWER
118.1 236.6 355.4
GND CON
126.2 275.8
ASR/PAR



Procedure turn South side of course remain within 10 NM

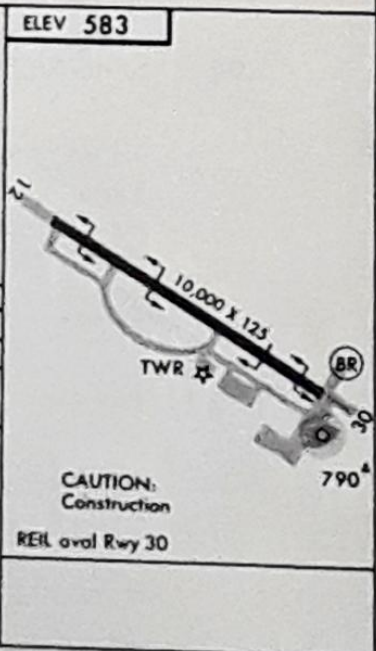


TLv 80
TA 6000

ELEV 583

CATEGORY	A	B	C	D
S-12	1120-1	537	(600-1)	
CIRCLING	1120-1	537 (600-1)	1140-1½ 557 (600-1½)	1140-2 557 (600-2)

NOTE: U.S. aircraft are restricted from flying within a 25 NM radius of VIENTIANE.



NDB (ADF)-1 RWY 12

17°22'N-102°48'E

CHANGWAT UDON THANI, THAILAND
UDORN A/D

LIMA AIRFIELDS

L01 Moung Sung TH 3348

NF 48-13, J-11A 20-19N, 102-27E
Elev 3281 1300x80 03/21
CLOSED GROWN OVER

L02 Moung Ou Tay QE 8948

NE47-8, J-10B 22-07N, 101-48E
Elev 2297 3000x118 04/22
CLOSED UNF

L03 Xieng Khong Ville UG 2740

NE48-1, J11D 19-21N, 103-22E
Elev 3117 2550x40 06/24
CLOSED UNF

L04 Sam Neua VH 0358

NF48-14, J-11A 20-25N, 104-04E
Elev 3281 3445x40 09/27
CLOSED UNF

L05 Paksong XB 4394

ND48-3, K-10A 15-19N, 106-20E
Elev 3445 3280x70 18/36
CLOSED GROWN OVER

L06 Ken Thao QV 5364

NE47-12, J-10C 17-45N, 101-23N
Elev 875 2720x132 Sod/Laterite 09/27
Land 27 TO 09, closed to large acft. during
rainy season. Caution when wet.
RESTRICTED
C123 MAXLW 52. MAXTOW 48.
C123K MAXLW 52. MAXTOW 48.

L07 Khong Island WA 8960

ND48-7, K-10A 14-07N, 105-50E
Elev 250 3110x62 Gravel 03/21

Closed to large aircraft during rainy season.

RESTRICTED

C123 MAXLW 52. MAXTOW 48.

C123K MAXLW 52. MAXTOW 48.

L08 Vientiane TE 4388

NE48-9, J-11D 17-59N, 102-34E
Elev 561 6538x150 Concrete 13/31

Lights: Until 2100L, avail. later on request.

Fuel: 100/130, 115/145, JP-1

Tower: 118.1 daylight hours

Company radio: VHF 119.1, 118.1, 121.5

HF 5568, 8765

Nav aids: NDB 405 VTN

OPEN

L09 Paklay QA 5516

NE48-8, J-10C 18-13N, 101-25E
Elev 917 1824x110 Grass 02/20

RESTRICTED

Caribou Closed when wet. MAXTOW 26.

MAX XWIND 10kts.

L10 Attapeu/VV XB 9738

ND48-8, K10A 14-48N, 106-50E
Elev 344 4400x37 Laterite 13/31

CLOSED UNF

L11 Pakse WB 8473

ND48-7, K-10A 15-08N, 105-47E
Elev 400 5325x130 Asphalt 14/32

Fuel: 100/130, 115/145, JP-1

Tower: 118.1 daylight hours

Company Radio: VHF 119.1, 118.1, 121.5

HF 5568, 8765

Nav aids: NDB 265 PS

OPEN

L07 Khong Island WA 8960

ND48-7, K-10A 14-07N, 105-50E
Elev 250 3110x62 Gravel 03/21

Closed to large aircraft during rainy season.

RESTRICTED

C123 MAXLW 52. MAXTOW 48.

C123K MAXLW 52. MAXTOW 48.

L08 Vientiane TE 4388

NE48-9, J-11D 17-59N, 102-34E
Elev 561 6538x150 Concrete 13/31

Lights: Until 2100L, avail. later on request.

Fuel: 100/130, 115/145, JP-1

Tower: 118.1 daylight hours

Company radio: VHF 119.1, 118.1, 121.5

HF 5568, 8765

Nav aids: NDB 405 VTN

OPEN

L09 Paklay QA 5516

NE48-8, J-10C 18-13N, 101-25E
Elev 917 1824x110 Grass 02/20

RESTRICTED

Caribou Closed when wet. MAXTOW 26.

MAX XWIND 10kts.

L10 Attopeu/VV XB 9738

ND48-8, K10A 14-48N, 106-50E
Elev 344 4400x37 Laterite 13/31

CLOSED UNF

L11 Pakse WB 8473

ND48-7, K-10A 15-08N, 105-47E
Elev 400 5325x130 Asphalt 14/32

Fuel: 100/130, 115/145, JP-1

Tower: 118.1 daylight hours

Company Radio: VHF 119.1, 118.1, 121.5

HF 5568, 8765

Nav aids: NDB 265 PS

OPEN

L21	Phong Savan	UG 1253
	NE48-1, J-11D	19-28N, 103-13E
	Elev 3609 2950/164	15/33
	<u>CLOSED UNF</u>	

L22	Xieng Khouang	UG 0552
	NE48-1, J-11D	19-27N, 103-09E
	Elev 3444 5250x140	06/24
	<u>CLOSED UNF</u>	

L23	Sayaboury	QB 8630
	NE47-4, J-10C	19-15N, 101-43E
	Elev 1070 2670x62 Gravel	16/34
	Land 16 TO 16, Do not taxi off runway or improved parking area during rainy season.	
	<u>RESTRICTED</u>	
	C123 MAXLW 52. MAXTOW 48.	
	<u>C123K</u> MAXLW 55. MAXTOW 55.	

L25	Ban Houei Sai/TT	PC 5141
	NF47-15, J-10B	20-15N, 100-25E
	Elev 1380 4920x118 Laterite	16/34
	Fuel: 100/130, 115/145, JP-1	
	Company Radio: VHF 119.1, 118.1, 121.5	
	HF 5568, 8765	
	Nav aids: NDB 340 RK, daylight hours	
	<u>OPEN</u>	

L26	Ou Neua	QE 8869
	NF47-8, J-10B	22-18N, 101-48E
	Elev 2592 2890x200	16/34
	<u>CLOSED UNF</u>	

L13	Moung Het	UJ 9803
	NF48-14, J-11A	20-50N, 104-02E
	Elev 886 5000x80	09/27
	<u>CLOSED UNF</u>	

L15	Phong Saly	TK 0000
	NF48-9, J11A	21-41N, 102-06E
	Elev 4500 990x50	01/19
	<u>CLOSED UNF</u>	

L16	Vang Vieng	TF 3294
	NE48-5, J-11D	18-55N, 102-28E
	Elev 971 4922 x90 Laterite/stone	18/36
	<u>RESTRICTED</u>	
	<u>C46</u> MAXTOW 45.	
	<u>C123</u> MAXTOW 52.	

L17	Sop Hao	VH 4373
	NF48-14, J-11A	20-33N, 104-27E
	Elev 820 1380x100	03/21
	<u>CLOSED UNF</u>	

L19	Moung Nong	XD 6010
	NE48-7, J-11D	16-22N, 106-30E
	Elev 600 1480x	
	<u>CLOSED UNF</u>	

L20	Bun Taio (Buntai)	RD 0968
	NF47-12, J-10B	21-06N, 101-59E
	Elev 1772 1300x60	18/36
	<u>CLOSED UNF</u>	

L21 Phong Savan UG 1253
NE48-1, J-11D 19-28N, 103-13E
Elev 3609 2950/164 15/33
CLOSED UNF

L22 Xieng Khouang UG 0552
NE48-1, J-11D 19-27N, 103-09E
Elev 3444 5250x140 06/24
CLOSED UNF

L23 Sayaboury QB 8630
NE47-4, J-10C 19-15N, 101-43E
Elev 1070 2670x62 Gravel 16/34
Land 16 TO 16, Do not taxi off runway or improved
parking area during rainy season.
RESTRICTED
C123 MAXLW 52. MAXTOW 48.
C123K MAXLW 55. MAXTOW 55.

L25 Ban Houei Sai/TT PC 5141
NF47-15, J-10B 20-15N, 100-25E
Elev 1380 4920x118 Laterite 16/34
Fuel: 100/130, 115/145, JP-1
Company Radio: VHF 119.1, 118.1, 121.5
HF 5568, 8765
Nav aids: NDB 340 RK, daylight hours
OPEN

L26 Ou Neua QE 8869
NF47-8, J-10B 22-18N, 101-48E
Elev 2592 2890x200 16/34
CLOSED UNF

L27 Moung Sai RC 1290
NF47-12, J-11B 20-41N, 102-00E
Elev 1804 3770x50 03/21
CLOSED UNF

L30 Boun Neua (Old) RD 0097
NF47-12, J-10B 21-38N, 101-54E
Elev 3035 1900x80 05/23
CLOSED UNF

L31 Moung Peun UH 8235
NF48-14, J-11A 20-12N, 103-53E
Elev 3937 1410x50 16/34
CLOSED UNF

L34 Moung Houn QC 5729
NF47-16, J-10B 20-08N, 101-27E
Elev 1600 2130x70 03/21
CLOSED UNF

L35 Paksane UF 5934
NE48-6, J-11D 18-24N, 103-40E
Elev 515 4650/75 Laterite/Sod 18/36
Braking action Fair to Good when wet. Do not
taxi off runway during rainy season.
OPEN

L38 Tchepone XD 2748
NE48-15, J-11D 16-43N, 106-12E
Elev 558 3940x65
CLOSED UNF

L39 Savannakhet VD 7530

NE48-14, 11D 16-33N, 104-46E
Elev 509 5850x140 Laterite 04/22
Lights: Available on request
Fuel: 100/130, 115/145, JP-1
Tower: 118.1
Company radio: VHF 119.1, 118.1, 121.5
HF 5568, 8765
Nav aids: NDB 290 SV
OPEN

L40 Thakhet-East VE 8521

NE48-10, J-11D 17-23N, 104-47E
Elev 500 2660x100 Crushed Rock 10/28
Do not taxi off runway or improved parking area
on South side of runway at West end when wet.
RESTRICTED
Caribou MAXTOW 26.
C123 MAXLW 52.5 MAXTOW 48.
C123K MAXLW 52.5 MAXTOW 52.5

L40A Thakhet-West VE 8124

NE48-10, J-11D 17-24N, 104-49E
Elev 492 2705x100 Sod 10/28
Fuel: 115/145
Poor drainage, normally closed during rainy
season.
RESTRICTED
C123 MAXLW 52.5 MAXTOW 48.
C123K MAXLW 52.5 MAXTOW 48.

L41 Ban Khoang (Moung Hai) QD 9232

NF47-12, J-10B 21-04N, 101-49E
Elev 2789 2030x100 13/31
CLOSED UNF

L42 Moung Sing QD 2343
NF47-12, J-10B 21-10N, 101-09E
Elev 2231 3960x164 13/31
CLOSED UNF

L44 Saravane XC 5237
ND48-3, K-10A 15-41N, 106-25E
Elev 550 4796x60 Laterite 06/24
RESTRICTED
C123 MAXTOW 52. Normally closed during
rainy season.

L45 Ban Soukhouma WB 8518
ND48-7, K-10A 14-38N, 105-48E
Elev 252 2950x
CLOSED

L46 Seno WD 0143
NE48-15, J-11D 16-40N, 105-01E
Elev 607 5960x131 PSP/Asphalt 08/26
3937x131 Laterite/Asphalt 04/22
RESTRICTED
C123 Use Runway 04/22, MAXTOW 51.

L47 Xam Tai VH 6211
NE48-2, J-11D 20-00N, 104-38E
Elev 820 1970x70 11/29
CLOSED UNF

L49 Sanakhan QV 8683
NE47-12, J-10C 17-55N, 101-36E
Elev 900 1800x70 Dirt 05/23
OPEN
Caribou, Helio, Porter only.

L50	Ban Na Tai	TH 6291
	NF48-13, J-11A	20-42N, 102-43E
	Elev 1470x130	08/26
	<u>CLOSED UNF</u>	

L52	Nong Khang	VH 0581
	NF 48-14, J-11A	20-37N, 104-05E
	Elev 3491 1600x250	07/25
	<u>CLOSED UNF</u>	

L53	Ban Phan Hop	WE 7941
	NE48-11, J-11D	17-32N, 105-45E
	Elev 558 2760x40	16/34
	<u>CLOSED UNF</u>	

L54	Luang Prabang	TH 0302
	NE48-1, J-11D	19-54N, 102-10E
	Elev 997 5413x93 Asphalt	06/24
	Tower: 118.1 daylight hours	
	Company Radio: VHF 119.1, 118.1, 121.5	
	HF 5568, 8765	
	Nav aids: NDB 379 LP	
	<u>OPEN</u>	

L56	Houei Kong	XB 6473
	ND48-4, K-10A	15-08N, 106-32E
	Elev 2930 1800x80	07/25
	<u>OPEN</u>	
	<u>Helio, Porter only</u>	

L57	Mahaxay	WE 2125
	NE48-11, J-11D	17-25N, 105-12E
	Elev 498 1200x	
	<u>CLOSED UNF</u>	

L107 Wat Phu WB 9142
ND48-7, K-10A 14-07N, 105-50E
Elev 400 2954x160 Earth 06/24
Normally closed during rainy season.
RESTRICTED
C123 MAXTOW 48.
C123K MAXLW 54. MAXTOW 52.5

L108 Moung Soui TG 7960
NF48-13, J-11D 19-32N, 102-54E
Elev 3600 5600x110 Laterite 06/24
Fuel: 115/145
Land 24 TO 06
RESTRICTED
C-46 MAXTOW 46. Closed when wet.
C123 MAXTOW 51. Closed when wet.

L109 Moung Kheung UG 0272
NF48-13, J-11D 19-38N, 103-06E
Elev 3500 5200x100 03/21
CLOSED UNF

L110 Ban An TG 9464
NF48-13, J-11D 19-35N, 103-02E
Elev 3700 3300x75 04/22
CLOSED UNF

L59 Moung Son/U UH 2862

NF48-13, J-11A 20-27N, 103-21E
Elev 2350 1970x50 Gravel 16/34
1350' of runway useable

OPEN

Helio, Porter only

L60 Moung Soi VH 5040

NF48-14, J-11A 20-16N, 104-31E
Elev 1312 2000x65 09/27

CLOSED UNF

L61 Moung Pha Lane WD 5844

NE48-15, J-11D 16-41N, 105-33E
Elev 520 1550x75 Sand/Sod 06/25

CLOSED

L100 Nam Tha QD 5019

NF 47-16, J-10B 20-58N, 101-24E
Elev 1968 4600x80 18/36

CLOSED UNF

L105 Ban Than Lay WE 0711

NE48-11, J-11D 17-17N, 105-04E
Elev 500 1800x50 15/33

CLOSED UNF

L106 Moung Phanh TG 9651

NE48-1, J-11D 19-26N, 103-05E
Elev 3400 3500x120 09/27

CLOSED UNF